

# HOW TO ADJUST THE YOKES

## If the heater produces a loud vibrating sound:

- Stop the heating cycle
- Are all contact surfaces clean and greased?
- Is the yoke positioned level on the poles?
- If this is not the case, follow the instructions below to adjust the yoke.

## Adjusting yokes with a length of 500 and 600 mm.

- Drill 2 holes in the hinge bushing after adjustment with drill bit Ø5 and secure the yoke with the provided locking nuts.

- 1** Remove dirt, burrs, etc., from the yoke and poles and grease lightly.

### Horizontal yokes

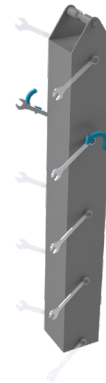
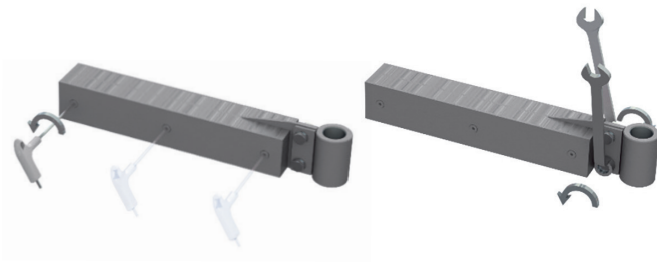
### Vertical yokes

- 2** Place the yoke on the hinge point and rotate it above the poles.

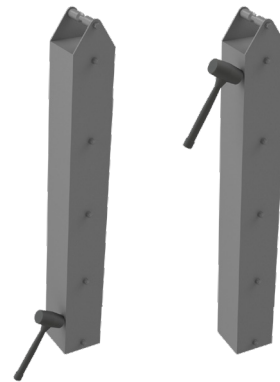
- 2** Place the yoke in front of the poles.

- 3** Loosen the socket screws and the bolts on the hinge bushing by about half a turn.

- 3** Loosen the bolts on the yoke by about half a turn.



- 4** Switch on the heater by pressing start. The yoke now sets itself. If necessary, a plastic (dead blow) hammer may be used.



- 5** When noise reduces, then tighten all bolts and switch off the heater.

