



## USER MANUAL

Hand and/or foot operated hydraulic workshop presses  
**BETEX<sup>®</sup> WSP**



## Contact

<b>Address</b>	Schaeffler Smart Maintenance BV Schorsweg 15 8171 ME Vaassen The Netherlands
<b>Tel</b>	+31 (0) 578 668000
<b>Web</b>	<a href="http://www.schaeffler-smart-maintenance-tools.com">www.schaeffler-smart-maintenance-tools.com</a>
<b>Mail</b>	<a href="mailto:info.smt@schaeffler.com">info.smt@schaeffler.com</a>
<b>ISO</b>	ISO 9001: 2015

## Warning!

### **Read the manual and safety instructions before operating the device**

Check all parts for possible damage during transportation. In case of damage, please contact the carrier immediately. Because our products are continuously subject to improvements, we reserve the right to make changes.

### **Vor inbetriebnahme die betriebsanleitung und die sicherheitsvorschriften aufmerksam lesen**

Alle teile auf möglichen transportschaden kontrollieren. Eventuelle schäden umgehend der spedition melden. Da unsere produkte ständig verbessert werden, behalten wir uns änderungen vor.

### **Antes de la primera puesta en marcha, lea atentamente el manual de uso y las instrucciones de seguridad**

Revise todos los elementos para detectar posibles daños sufridos durante el transporte. En caso de observar algún daño, avise inmediatamente a la empresa de transporte. Debido a que nuestros productos están continuamente sujetos a mejoras, nos reservamos el derecho de realizar cambios.

### **Lisez le mode d'emploi et les consignes de sécurité avant la mise en service**

Vérifiez pour l'ensemble des pièces que celles-ci n'ont pas été endommagées pendant le transport. En cas de dommages, avertissez immédiatement le transporteur. Nos produits étant constamment améliorés, nous nous réservons le droit d'apporter des modifications.

### **Lees voor ingebruikname eerst de gebruiksaanwijzing en de veiligheidsvoorschriften**

Controleer alle onderdelen op mogelijke transportschade. Waarschuw bij schade onmiddellijk het transportbedrijf. Omdat onze producten voortdurend worden verbeterd, behouden wij ons het recht voor om wijzigingen aan te brengen.

# ENGLISH

## Contents

<b>1. Safety precautions .....</b>	<b>5</b>
<b>2. Assembly .....</b>	<b>6</b>
<b>3. Shop press frames .....</b>	<b>7</b>
3.1 General .....	7
3.2 Operation .....	8
3.3 Raising and lowering the bolster .....	8
<b>4. Trouble shooting .....</b>	<b>9</b>
<b>5. Disclaimer .....</b>	<b>9</b>
<b>6. Spare parts .....</b>	<b>10</b>
<b>7. CE Declaration of conformity .....</b>	<b>11</b>

## 1. Safety precautions

- The owner of the press must see that it is installed and operated in accordance with local safety standards.
- Locate the press in an isolated area or shield it to minimize danger to others ; high hydraulic pressure can cause materials to break, possibly causing personal injury.
- Wear protective eyewear
- Because this is a general purpose press which may be used in many different applications over a short period of time, it is not possible for the manufacturer to provide practical, " all-purpose " shielding. The owner of the press must fabricate such shielding as is practical and necessary for a particular application. A certain degree of safety is afforded by wrapping the work in heavy cloth, such as canvas, before applying pressure.
- Work piece must be well supported and aligned so that when pressure is exerted, parts being " pressed " do not slip out or break.
- To prevent accidental slippage, do not place work pieces on the press bed, or apply hydraulic force, until all bolster pins are in place and all tension has been removed from the bolster lift cables.
- Do not overstress adapters. Any pushing or pulling adapters used with this press must have a maximum tonnage rating equal to or higher than the maximum tonnage rating of the press, or breakage may occur.
- User must ensure that all safety related decals are installed, maintained, and replaced when they become hard to read.
- The press is designed for shop maintenance applications. For information regarding other applications, contact technical service.
- This press can exert extremely high forces at moderate hydraulic pump pressure. If you have any questions concerning how much force is exerted at a given pressure, contact technical services.

## 2. Assembly

### IMPORTANT!



- During assembly of the press, hand tighten nuts and bolts unless otherwise directed. Wrench tighten after assembly is completed.
- Screw the ram into the ram mounting plate until the ram threads are flush with the bottom of the mounting plate (full plate threaded engagement).

Assemble the 25 ton shop press as shown on Figure 1. Securely tighten the eight 1/2" bolts which fasten the press together.

### Hydraulic Assembly

1. Compare parts list as enclosed to your individual press number if all the press parts are included.
2. Remove pipe plug from ram, and install straight union fitting into ram.
3. Assemble ram into mounting plate with fitting facing pump side of press.

### Pumps

1. Air driven pumps and foot - or hand-operated pumps can be positioned on the shop press or floor for the convenience of operator.
2. Refer to the instructions for the specific Betex pump model being used for more complete hydraulic hookup information.

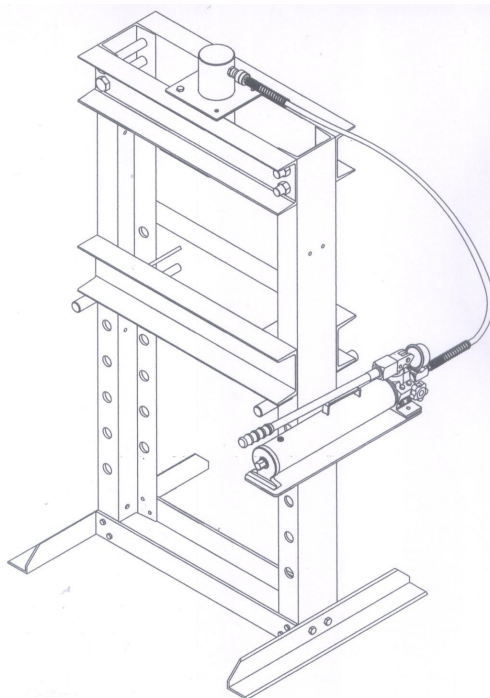


Fig. 1

### 3. Shop press frames

#### SAFETY PRECAUTIONS!



These instructions are intended for end-user application needs. Many problems with new equipment are caused by improper operation or installation.

#### WARNING!



It is operator's responsibility to read and understand the following safety statements,

- Only qualified operators should install, operate, adjust, maintain, clean, repair, or transport this machinery.
- These components are designed for general use in normal environments. These components are not specifically designed for lifting and moving people, agri-food machinery, certain types of mobile machinery or special work environments such as: explosive, flammable or corrosive. Only the user can decide the suitability of this machinery in these conditions or extreme environments.
- Our distributors will supply information necessary to help make these decisions.

**WARNING:** To help prevent personal injury

#### 3.1 General

- The owner/operator of this press must see that it is installed and operated according to OSHA, state, local EU and other safety standards where applicable.
- Install the press in an isolated area, or shield the press, and/or wrap the workplace in a safety blanket to minimize danger to others. Hydraulic pressure can cause materials to break, possibly resulting in personal injury due to flying objects, falling objects, shifting loads and other hazards.
- This press is designed for shop maintenance applications. Guards, enclosures, monitors, interlocks, controls, restraints, and other devices must be used by the owner/operator. For information regarding other applications, contact our distributors.
- Additions of specific safety equipment, such as permanent enclosures, guards or shields, light curtains, etc., to the press must be on separate, free-standing structures, or clamped to the press frame without cutting, drilling, welding or otherwise modifying the press structure or affecting its function. Such modifications can cause equipment damage and/or personal injury.
- Modifications to the structure and function of the press are not permitted, voids the warranty, may cause personal injury, and voids the Declaration of incorporation.
- Any press accessories, fixtures, plates, or special equipment used with the press must have a maximum tonnage rating equal to or higher than the maximum tonnage rating of the press, or breakage and possible injury can occur.
- The owner/operator of the press must ensure that all safety-related decals are installed, maintained, and replaced if they become hard to read.

### **3.2 Operation**

- The press operator and anyone within sight of the press must wear protective eyewear that meets the requirements of OSHA, ANSI, or applicable EU standards.
- It is the owner/operator's responsibility to use appropriate guarding to contain any pieces that might break to fly apart when applying force. For added protection, always wrap the workpiece in a protective blanket before applying force.
- Keep hand out of the work area during a pressing operation.
- Workpiece must be well supported and aligned so that cylinder/ram force is straight, and parts being pressed cannot slip out or break.
- Use caution when loading and unloading the press.

### **3.3 Raising and lowering the bolster**

- To prevent accidental slippage, do not apply hydraulic force or place work pieces on the press bed until bolster support pins are in place.
- Remove the work piece or load before moving the bolster to prevent cable breakage.
- When raising or lowering the bolster place one support pin all the way through each front and back upright in the highest hole under the bolster that will not interfere with the new bolster position.
- Remove your hands from the support pins after the pins are in place. Failure to do so can result in personal injury if the bolster falls.
- When raising the bolster, leave the support pins in place until the bolster is raised to its new position.
- Remove your hands from the support pins after the pins are in place. Failure to do so can result in personal injury, if the bolster falls.
- Keep hands, feet, legs and other body parts out from underneath the bolster, load or work piece. Failure to do so can result in personal injury.
- Inspect the entire press assembly before each use. Repair or replace worn or damaged components. Tighten loose fasteners.



## 4. Trouble shooting

### CAUTION!



To prevent personal injury, release pump pressure and disconnect the hose from the pump before making repairs.

Problem	Cause	Solution
Pump loses pressure	<ul style="list-style-type: none"><li>• System components leaking.</li></ul>	<ul style="list-style-type: none"><li>• Repair or replace as necessary.</li></ul>
Pump not delivering fluid	<ul style="list-style-type: none"><li>• Lower fluid level in Reservoir.</li><li>• Seals are worn.</li></ul>	<ul style="list-style-type: none"><li>• Check the fluid level.</li><li>• Repair seals or replace pump body.</li></ul>
Pump does not reach rated capacity	<ul style="list-style-type: none"><li>• Lower fluid level in Reservoir.</li><li>• System components leaking.</li><li>• Fluid leading past inlet or outlet checks.</li></ul>	<ul style="list-style-type: none"><li>• Check the fluid level.</li><li>• Repair or replace as necessary.</li><li>• Repair Inlet or Outlet checks or replace high pressure piston seal.</li></ul>
Pumping has a "spongy" feel	<ul style="list-style-type: none"><li>• Air tapped into system.</li><li>• Too much fluid in Reservoir.</li></ul>	<ul style="list-style-type: none"><li>• Refer to Air Bleeding.</li><li>• Check fluid level.</li></ul>

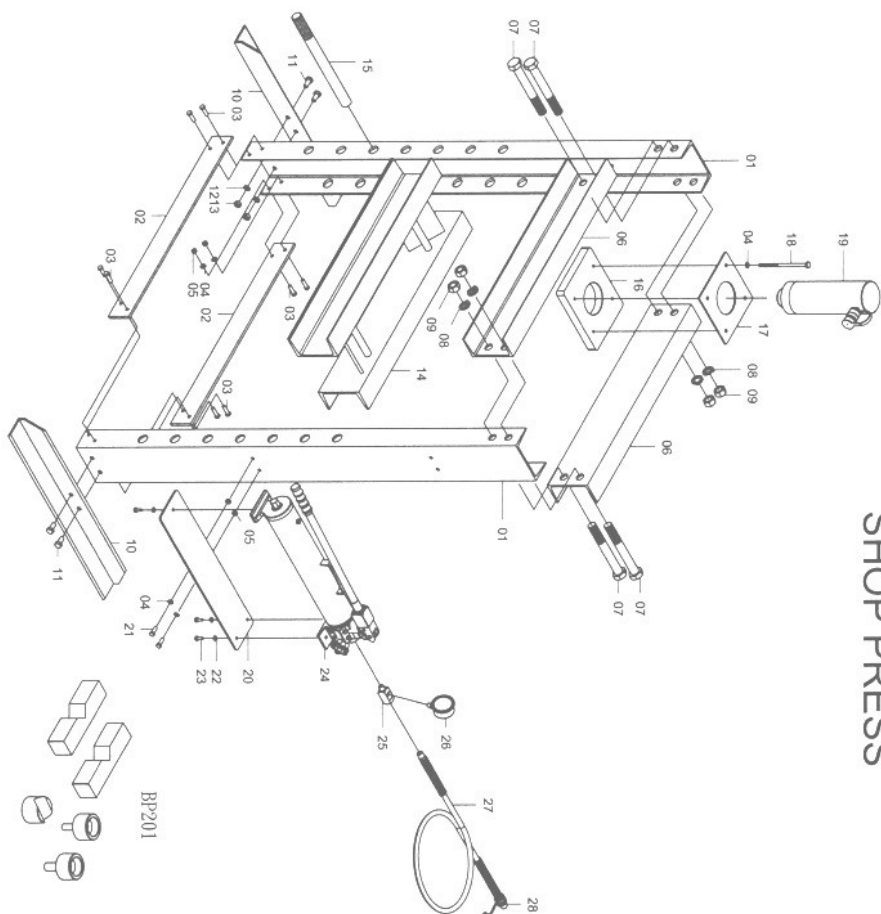
## 5. Disclaimer

The manufacturer and/or supplier cannot be held liable for any damage or consequential damage resulting from incorrect use of the device or damage to workpieces and any consequential damage resulting from a defect in the device.

## 6. Spare parts

REF NO.	PARTS NO	DESCRIPTION	QTY
01	C0879	Support	2
02	C0889	Connected Plate	2
03	H0077	Screw	8
04	J0053	Spring Washer	12
05	H0022	Nut	8
06	C0877	Connector	2
07	H0267	Screw	4
08	J0272	Spring Washer	4
09	H0202	Nut	4
10	C0878	Work-Bench Base	2
11	H0033	Screw	4
12	J0016	Spring Washer	4
13	H0020	Nut	4
14	B0848	Unholding Base	1
15	E1170	Pin	2
16	C0885	Lower Cylinder Fixed Base	1
17	C0886	Upper Cylinder Fixed Base	1
18	H0269	Screw	4
19	K0308	Cylinder	1
20	B0999	Fixing for Pump	1
21	H0040	Screw	2
22	J0023	Spring Washer	3
23	H0030	Screw	3
24	HC1500	Two-Speed Pump	1
25	E0567	Gauge Adapter	1
26	M0038	Hydraulic Gauge	1
27	HS335	Hose	1
28	CP332	Hose Half Coupler	1
29	BP201	(Attached)	1

## SHOP PRESS



## 7. CE Declaration of conformity

# CE Declaration of Conformity

Manufacturer's name: Schaeffler Smart Maintenance Tools BV  
Manufacturer's address: Schorsweg 15, 8171 ME Vaassen, NL  
www.schaeffler-smart-maintenance-tools.com

**This declaration of conformity is issued under the sole responsibility of the manufacturer.**

**Brand:** BETEX

**Product description:** Workshop presses

**Product name/type:**

- WSP10
- WSPA10
- WSP10HD
- WSPA10HD
- WSPE10HD
- WPS25
- WSPA25
- WSPE25

**Comply with the requirements of:**

- Low Voltage Directive 2014/35/EU
- Machine Directive 2006/42/EC
- EMC Directive 2014/30/EU

**Applicable harmonized standards:**

- EN-ISO 12100:2010
- EN-ISO 4413:2010

H. van Essen  
Managing Director  
Schaeffler Smart Maintenance Tools BV



Place, Date:  
Vaassen, 10-11-2025



